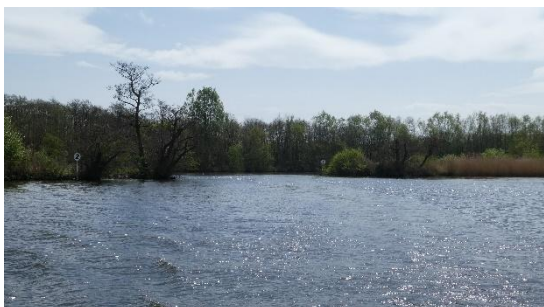


**The 32nd British Rowing National Tour on the Norfolk Broads - Rivers Bure, Waveney and Yare
4th - 7th June 2026**

River Bure - Wroxham Broad to Thurne Dyke

The tour starts at the Norfolk Broads Yacht Club on Wroxham Broad. The River Bure is relatively wide, so a relaxed start to the tour.



Leave the Yacht Club and aim for the opening on to the River Bure on the far right-hand side of the broad between posts marked 1 and 2.

Keep on the main river unless you wish to explore Salhouse Broad which is off to the right just past some moorings on the on the left. It may be possible to beach the boat here and explore the small park to the side of the broad.



Above are photos of the entrance and the exit marked by red posts.

Follow the river to Horning. Beware that the 'Mississippi paddle boat' may be moored by the grassed area on the bend.



Continue around the bend.

**The 32nd British Rowing National Tour on the Norfolk Broads - Rivers Bure, Waveney and Yare
4th - 7th June 2026**

There will be a sign to the mouth of the River Ant on the left-hand side of the river just past Horning Hall.

Continue straight, staying on the main river.

The River Bure is much wider. A few hundred yards on the left are the remains of St Benet's Abbey.



When the River Bure turns right towards Great Yarmouth, **turn sharp left** on the River Thurne signed to Potter Heigham and Hickling. Lookout for traffic going straight across this junction.



After 500m, after a bright white wind pump on the left, get ready to stop for lunch at the wind pump on the right.

Moor or lift the boats from the water at the entrance to Thurne Dyke.

To return to the start, follow the same route in the opposite direction.

When entering Wroxham Broad, keep to the left hand side, travelling clockwise with the bank to the left, and land at the public slipway.