

Buoys

Navigation Buoys

What are they for?

- To mark the sides of well-defined, navigable channels.
- They are coloured red (port hand marks) and green (starboard hand marks) as seen from the sea.
- This boat is going upstream – red on the left and green on the right. Downstream it's red on the right.



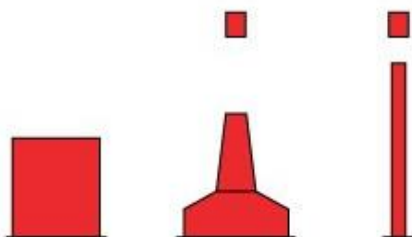
This boat is going upstream, with the red buoy on its port (left-hand) side.

Buoy shapes

Buoys come in various shapes, but there is no difference in meaning:

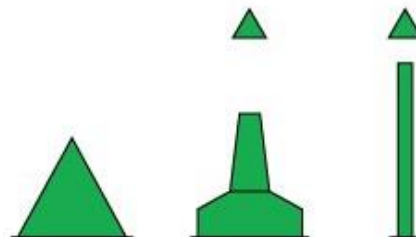
PORT HAND

Colour: Red.
Shape: Can, pillar or spar.
Top mark: Single red can.

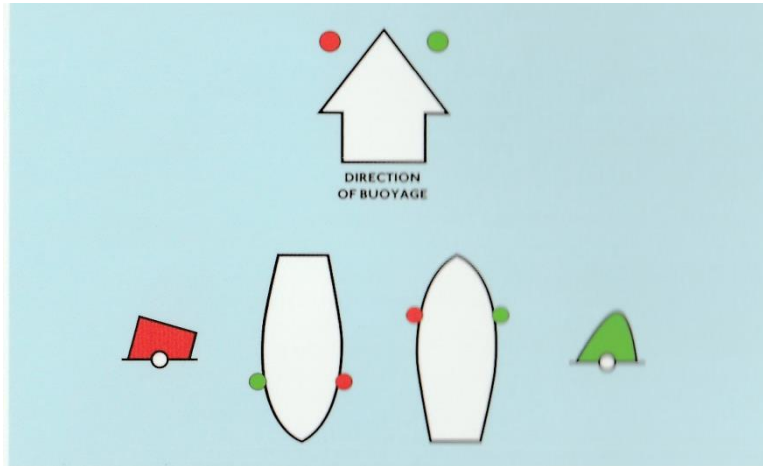


STARBOARD HAND

Colour: Green.
Shape: Conical, pillar or spar.
Top mark: Single green cone point upward.



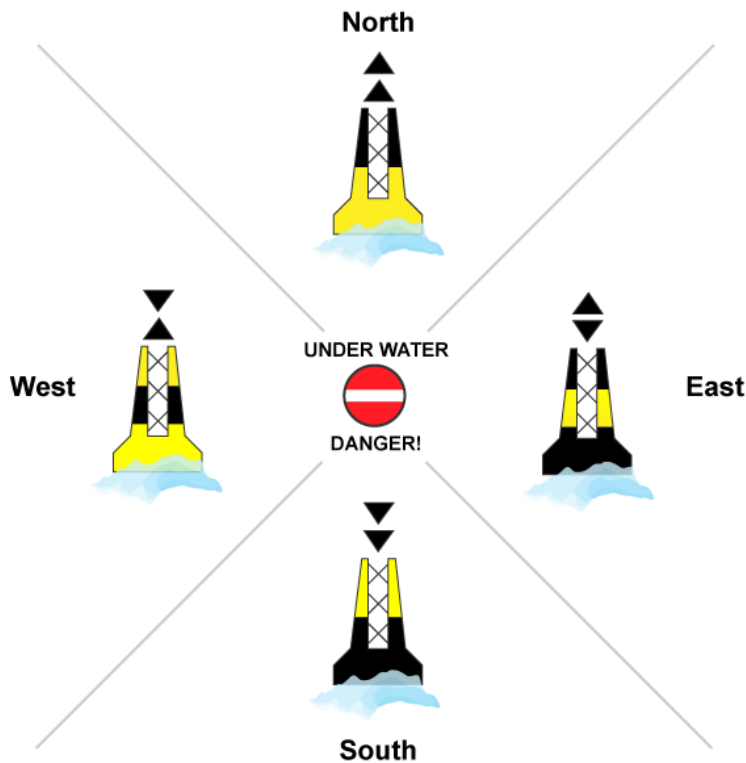
Direction of Buoyage



The direction of buoyage determines which is port side and which is starboard. It is usually upstream on rivers and canals. On lakes or the sea, consult the local charts. Keep to the right of the navigation channel.

Other Buoys

You may encounter buoys warning of isolated hazards – they have horizontal red and black bands and two black balls on top.



These buoys indicate the safest route - keep to the North/West/East/South side of them (usually on the sea or lakes)

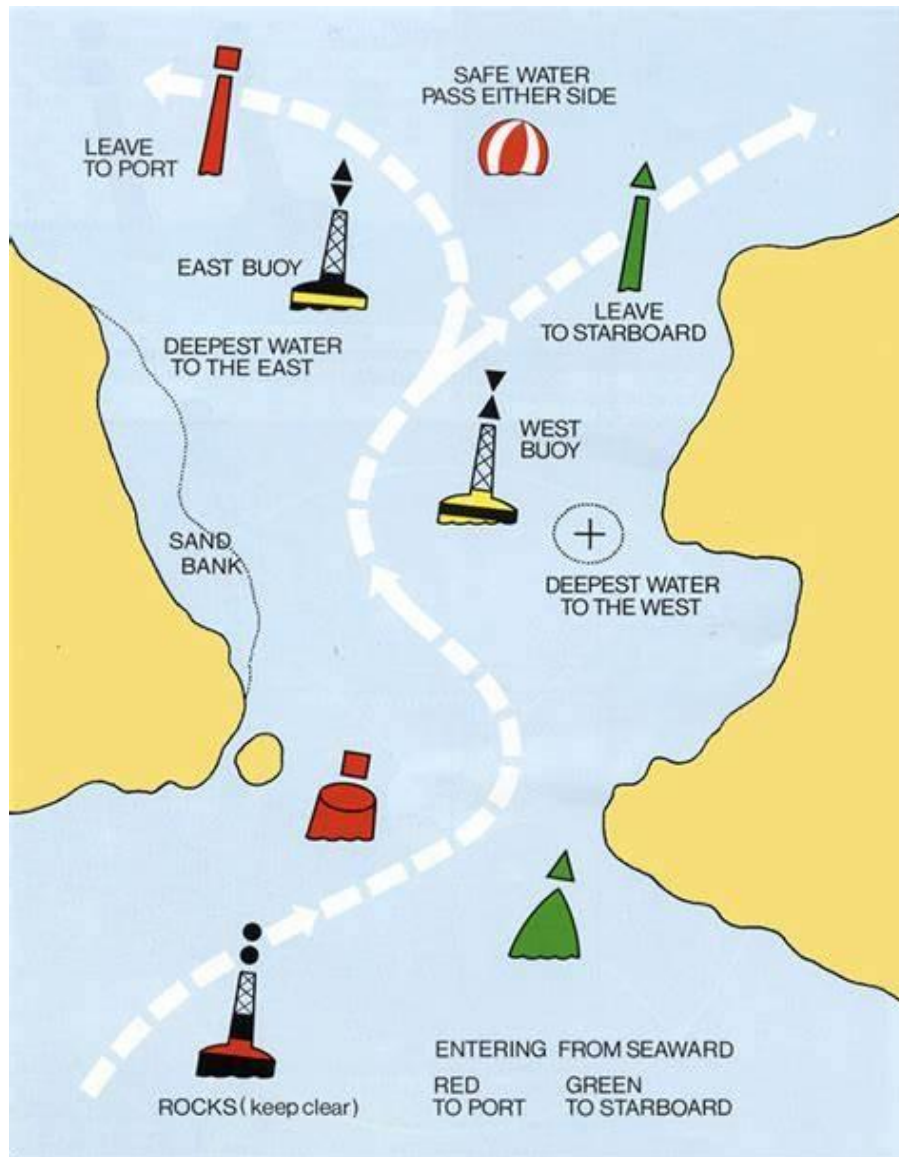
Even more buoys



Red and white vertical stripes indicate safe, deep water, usually at the seaward end of a channel



These marks have no navigational significance. They are used as race buoys, to define swimming or water-skiing zones, firing ranges, but not to mark a hazard to navigation. They can be any shape but are always yellow.



[Back to Menu](#)

[Next section](#)